

Back to bright

Opalescence[™] Endo Whitening

- 35% hydrogen peroxide
- Specifically formulated to whiten endodontically treated, discolored, non-vital teeth
- Designed for the “walking bleach” technique
- Convenient, premixed syringe delivery



Opalescence[™]
tooth whitening systems



Non-Vital “Walking Bleach”



Courtesy of Dr. Rich Tuttle.



Before



After

Courtesy of Dr. Jaleena Jessop.



Before



After

Opalescence™ Endo Whitening



MUST BE REFRIGERATED

1270 - Opalescence Endo Syringe Kit
2 x 1.2 ml Opalescence Endo syringes
20 x Black Mini tips



MUST BE REFRIGERATED

1323 - Opalescence Endo Syringe 2pk
1.2 ml syringes

Procedure

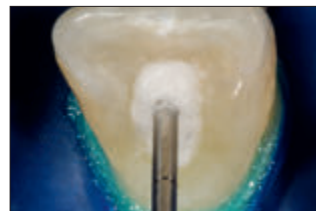
Courtesy of Dr. Carlos Ramos.



1. Completely remove all the restorative and root sealing material from the coronal pulp chamber and 2–3 mm below healthy gingiva. Place a 2 mm thick conventional glass ionomer or a resin-modified glass ionomer to seal the endodontically treated canal. Verify set of material before proceeding.



2. Express Opalescence Endo whitening into the coronal pulp chamber, avoiding soft tissues. Fill the pulp chamber leaving 3–5 mm of space to allow for the depth necessary of temporary filling material such as J-Temp™ temporary resin or UltraTemp™ Regular material.



3. A thin cotton membrane or a small piece of cotton pellet can be used as a separator between temporary and whitening gel. Make sure to place gently to not displace the whitening gel onto the margins, as this will compromise the temporary seal. However, this is not a requirement if adequate space is left to accommodate temporization.



4. Deliver mixed UltraTemp™ Regular filling material directly to site.



5. Easily wipe away excess with a wet cotton ball before it sets.



Finished. Repeat every 1–5 days until desired results are achieved.

Please refer to ultradent.com for complete Instructions for Use.



SCAN
TO VIEW
PRICING