



# ULTRA-ETCH™



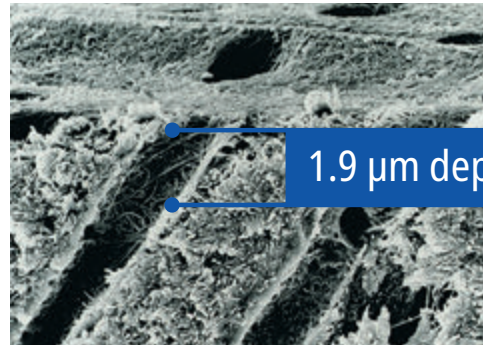
The art of  
precise placement.

## Tried, True & BLUE

- Easy placement and rinsing—distinctive blue color enhances placement and ensures complete removal.
- Ideal viscosity—ensures precise placement without migrating, even on vertical surfaces.
- Enhanced capillary action—penetrates the smallest fissures on occlusal surfaces.
- Peace of mind—unique self-limiting chemistry reduces the risk of overetching, creating the optimal surface to receive resin.



Clinical experience and FE-SEM evaluations<sup>1</sup> show that 15 seconds etch time on both dentin and cut enamel provides optimal conditioning of both tissues. Air/water rinse. Blot excess water off, leaving surface visibly wet.



1.9 µm depth

Ultra-Etch phosphoric acid is proven to be uniquely self-limiting in its depth of etch, with an average depth of 1.9 µm using 15-second etch. Liquid phosphoric acid (37%) showed an average of 5.0 µm at 20 seconds, and a competing “polymer thickened” etchant a 4.8 µm depth.<sup>1</sup> Acids with this greater depth of etch go beyond the optimum level and increase the potential for incomplete resin impregnation.



Listed as a “Can’t Live Without” product by a prominent independent research institute.<sup>2</sup>




2021



14x Winner



10x Winner

163	Ultra-Etch Kit 4 x 1.2 ml syringes 20 x Blue Micro tips	164	Ultra-Etch Refill 4 x 1.2 ml syringes	685	Ultra-Etch IndiSpense™ Syringe 1 x 30 ml IndiSpense syringe
167	Ultra-Etch Econo Kit 20 x 1.2 ml syringes 40 x Blue Micro tips	168	Ultra-Etch Econo Refill 20 x 1.2 ml syringes	 <p><b>*Volume discounts available at three and five</b></p>	
383	Ultra-Etch IndiSpense™ Kit 1 x 30 ml IndiSpense syringe 20 x Blue Micro tips 20 x 1.2 ml empty syringes	1407	Ultra-Etch Econo Refill 50 x 1.2 ml syringes		



SCAN TO VIEW PRICING

1. Perdigão J, Lambrechts P, Van Meerbeek B, Vanherle G. A field emission SEM study of dentin etched with different phosphoric acid compositions and/or concentrations. Katholieke Universiteit Leuven: Leuven, Belgium; 1994. Data on file. 2. “Can’t Live Without” Clinical Research Associates Newsletter, Volume 21, Issue 7, July, 1997. 3. www.realityesthetics.com.

